



NATIONAL CENTER for
INTERPROFESSIONAL
PRACTICE and EDUCATION

November 1, 2017

IPE: “A Great Truth Waiting for Scientific Confirmation”

Barbara F. Brandt, PhD, Director

Webinar for the HRSA Primary Care Training and Enhancement Program grantees

Interprofessional Education and Collaborative Practice

The “New IPE” – Interprofessional Practice and Education

Interprofessional education “occurs when two or more professions learn with, about, and from each other to enable effective collaboration and improve health outcomes.”

Interprofessional, collaborative practice “occurs when multiple health workers **and students and residents** from different professional backgrounds provide comprehensive health services by working with patients, their families, carers (caregivers), and communities to deliver the highest quality of care across settings.”

Adapted from:

The Centre for the Advancement of Interprofessional Education, UK, 1987

World Health Organization, Framework for Action on Interprofessional Education and Collaborative Practice, 2010.



What We Value: National Center Vision

We believe **high-functioning teams** can improve the experience, outcomes and costs of health care.

National Center for Interprofessional Practice and Education is studying and **advancing the way stakeholders in health work and learn together.**

National Center Founders and Funders

Health Resources and Services Administration Cooperative Agreement Award No. UE5HP25067

Gordon and Betty Moore Foundation

Josiah Macy Jr. Foundation

Robert Wood Johnson Foundation

University of Minnesota

John A. Hartford Foundation



The Nexus

Creating a deeply connected, integrated learning system to transform education and care together



HRSA Principles

June 1, 2012 Funding Opportunity Announcement

A coordinating center for interprofessional education and collaborative practice will provide **leadership, scholarship, evidence, coordination, and national visibility** to advance interprofessional education and practice as a viable and efficient health care delivery model. (p.4)

“Unbiased, neutral convener”





NATIONAL CENTER for
INTERPROFESSIONAL
PRACTICE and EDUCATION

Thought Leadership

Strategic Imperative: Shape the future of the field among key stakeholders across practice, education and policy by simultaneously sharing new knowledge and testing emerging theories in practical environments through a network of affiliates and ambassadors

Knowledge Generation

Strategic Imperative: Facilitate evidence-based research approaches to inform practice and learning in real time using standardized processes, scholarly dissemination

Strategic Focus Areas

Education and Training

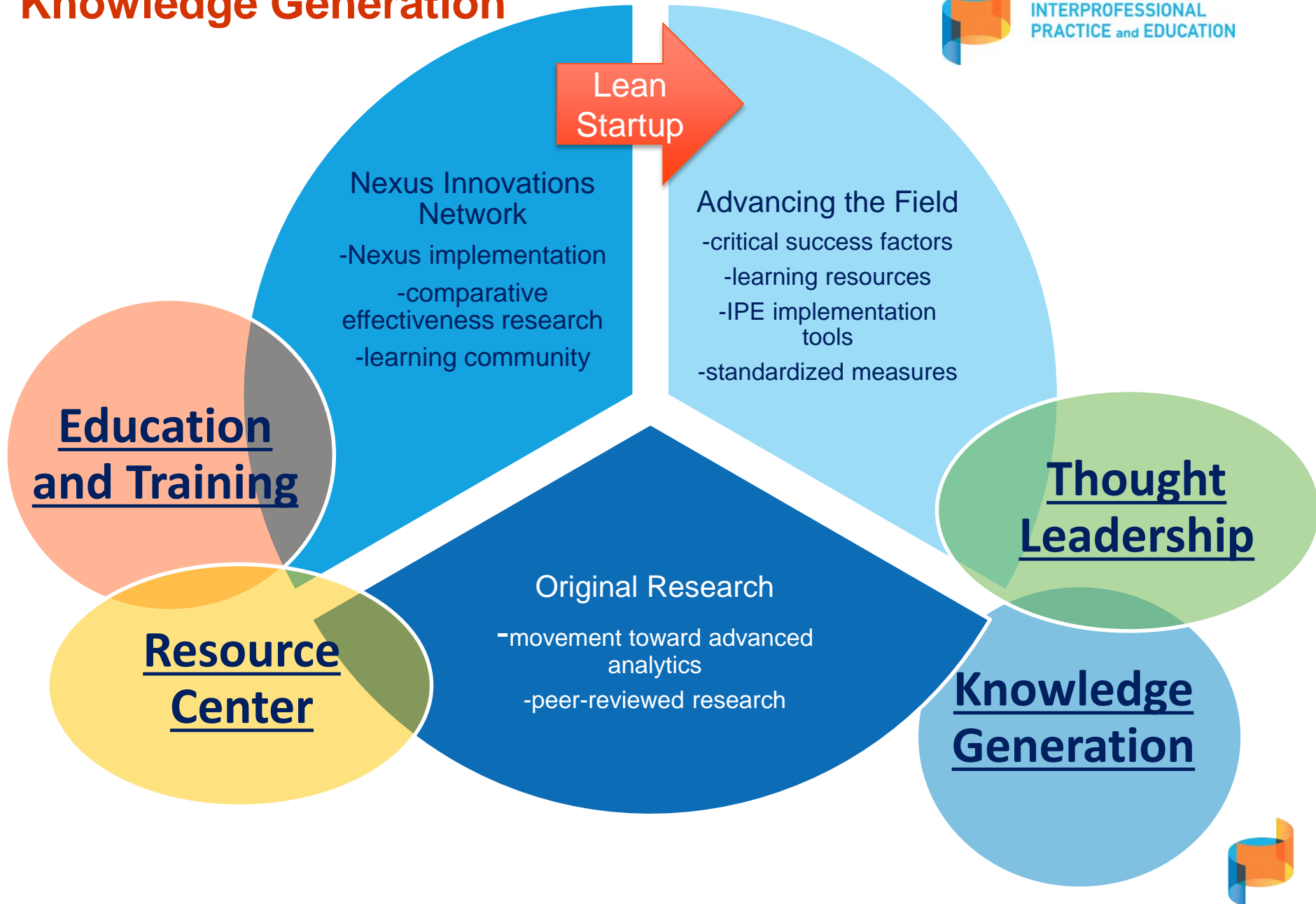
Strategic Imperative: Utilize cutting-edge knowledge through data, experience and expertise to create an innovative Nexus Learning System to share the latest learning and tools

Resource Center

Strategic Imperative: Leverage institutional and community expertise in a robust framework to serve the end-user in the vanguard of interprofessional practice and education

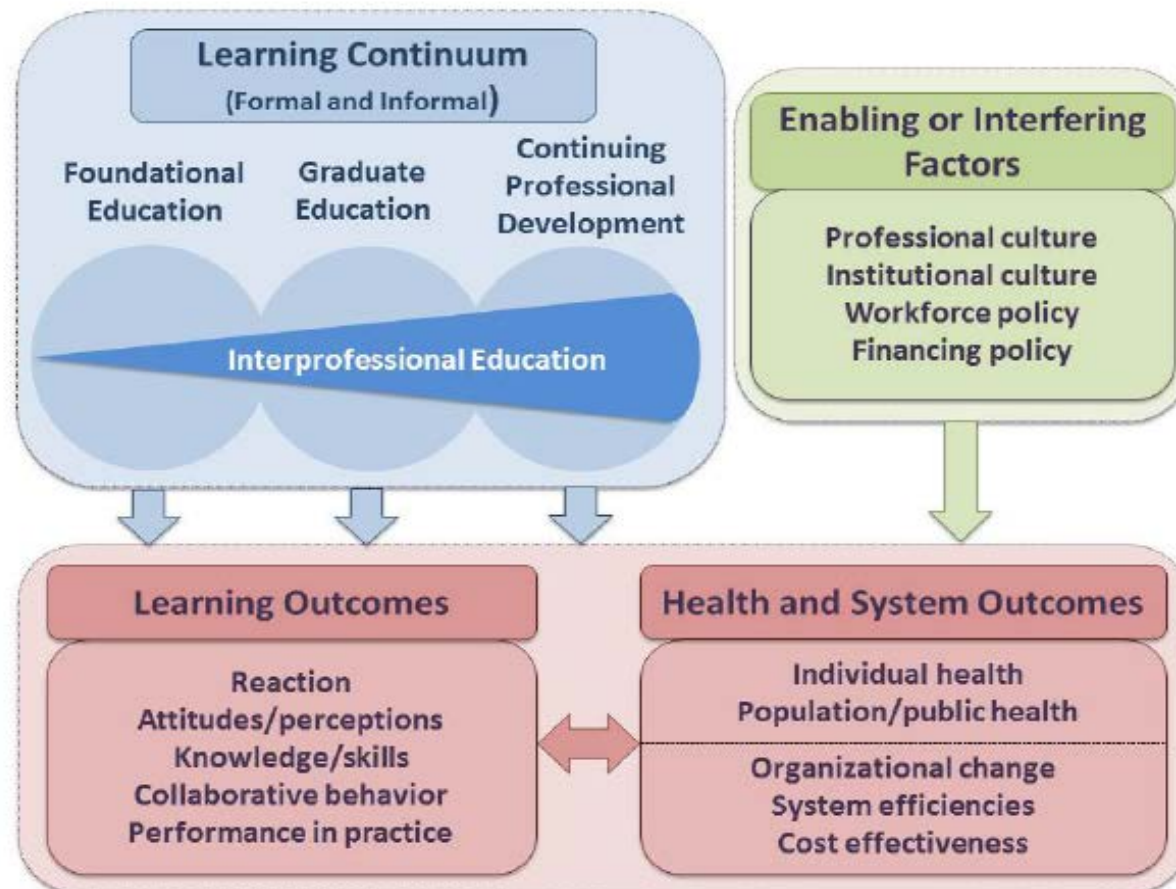


Knowledge Generation



Synergy: IOM Model as Workplan Framework

FIGURE: The interprofessional learning continuum (IPLC) model



NOTE: For this model, “graduate education” encompasses any advanced formal or supervised health professions training taking place between completion of foundational education and entry into unsupervised practice.



Leadership in Knowledge Generation



Connie Delaney, PhD, RN, FAAN, FACMI, FNAP
Professor and Dean, School of Nursing
University of Minnesota

- Fellow, College of Medical Informatics
- Former Acting Director, University of MN Institute for Health Informatics
- Inaugural appointee, USA Health Information Technology Policy Committee, HHS Office of the National Coordinator
- Active researcher and writer in areas of national data and information technology standards development, integrative informatics, outcomes/safety, big data and data analytics, translational science



A Growing National Network

National Coordinating Center for
Interprofessional Education and Collaborative Practice

The Nexus Innovations Incubator*

*Pre-award members



2012 Vision

Up to 10 “incubators”

As of August 2017

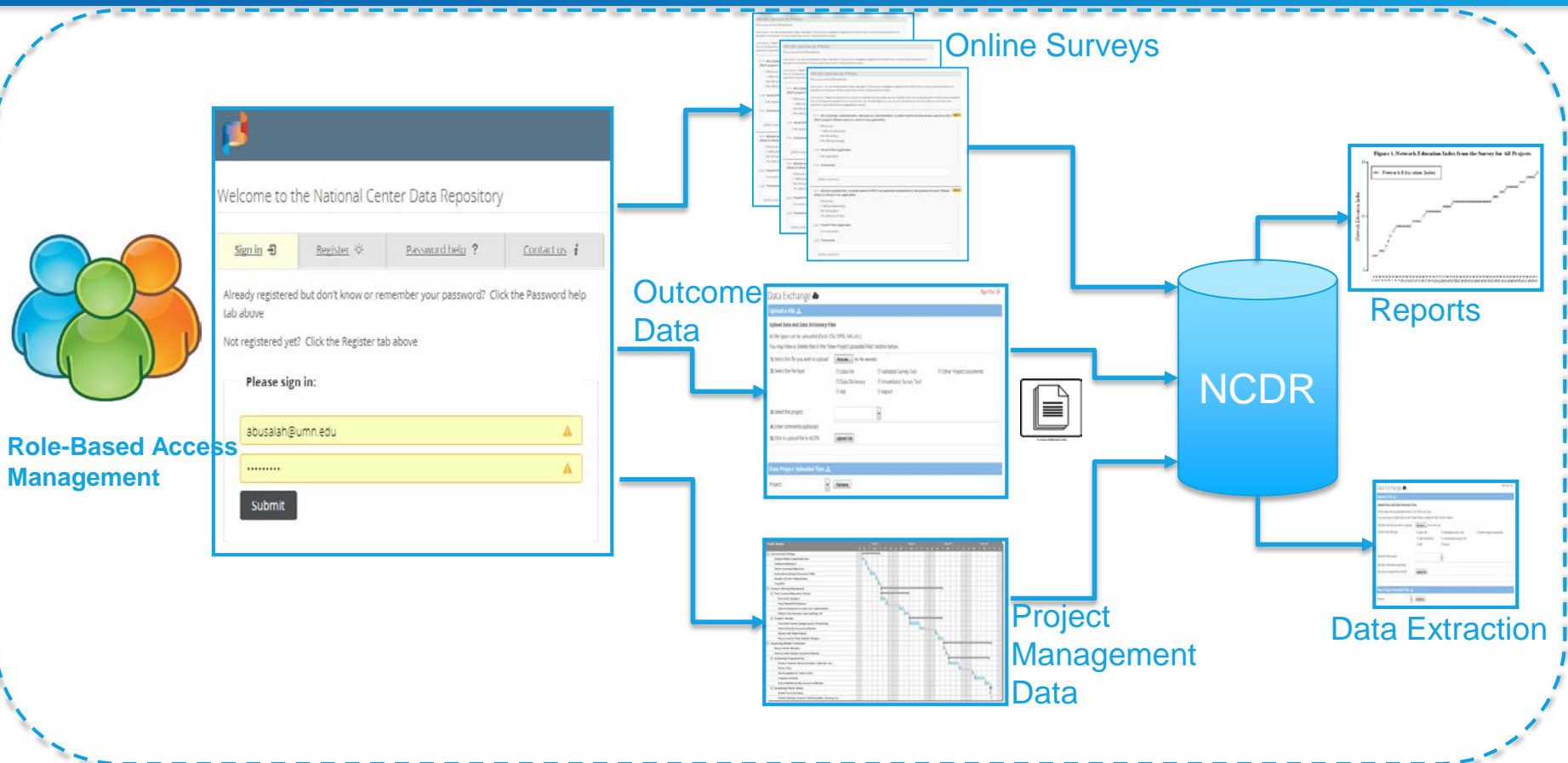


2017 Highlights

- 33 states
- 73 sites
- 107 projects



National Center Data Repository (NCDR) Data Infrastructure



PHI Compliant Environment || Secure Data Transfer & Storage || Role-Based Access || Encrypted DB
Compliant with IRB || Health Info Privacy & Compliance Office || Center of Exc. for HIPAA Data



What Have We Learned?

Emerging Critical Success Factors



Process of care redesign is about changing culture.



Compelling vision is required.



IP+E resourcing is critical.



Senior leadership is essential.



Impressions of team training effectiveness are mixed.



Changing Models

Development

Expertise and
dependence

Scaffolding & Support

Interdependence

Engagement and
standardization



Nexus Innovations Network Onboarding Path

Explore: Cultivate your local Nexus

9

Learn: Interprofessional Practice AND Education (Nexus)

Learn about interprofessional practice and education

Access Nexus resources to support local development

Learn about National effort to generate IPECP transformation

Organize your team

Align resources to achieve the vision

Define your Nexus workplan and desired outcomes

Design: Network engagement to optimize outcomes

19

Introduction to National Center surveys and metrics

Align workplan with national vision

Legal Agreement of membership in the Nexus Innovations Network

Real-time resources to support development

Using data to tell your story

Data collection and analytics

Plan for data collection and IRB

Implement: Generating new knowledge

2

Sustain: Nexus transformation for improved education and practice outcomes

77

Scholarship and Publications



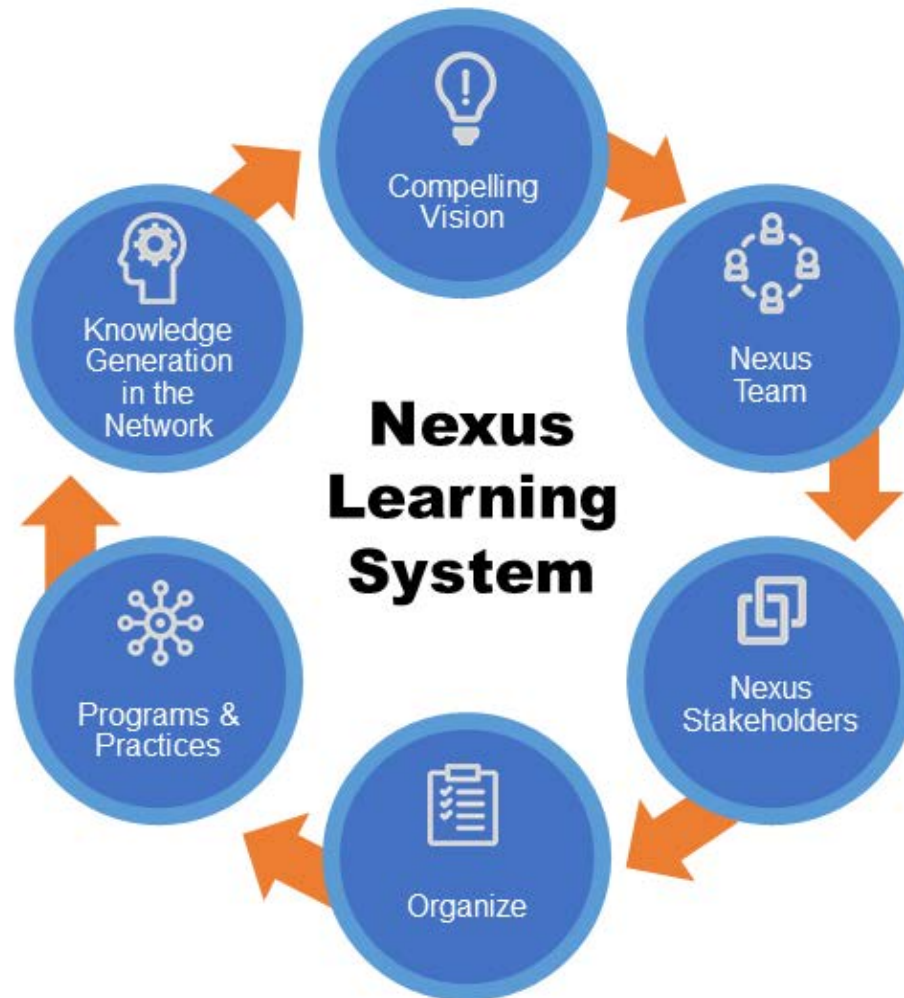
Designing the Core Essential Data Set

Building upon depth and breadth of what has been learned, we are committed to:

- **Data reduction** based on what we have learned
- Using existing **standardized measures** when available
- Incorporating other **key requirements** into streamlined surveys
- Providing **real-time access** to your data with comparable national reference points
- Integrating outcomes data into **core data set**
– working toward BIG data



Nexus Learning System



Resource Center



NATIONAL CENTER for
INTERPROFESSIONAL
PRACTICE and EDUCATION

Education
and Training

Resource
Center

Community Engagement

- vibrant discussion platform for burning issues
- unbiased, neutral convener
- professional directory empowers connections

Outreach

- sharing IPE stories
- empowering ambassadors to spread the word
- connecting needs with available resources
- growing the community and meeting people where they are

Resources and Expertise

- leading-edge resources designed and curated in response to emerging trends and needs
- data-informed usability analyses for continuous quality improvement

Thought
Leadership

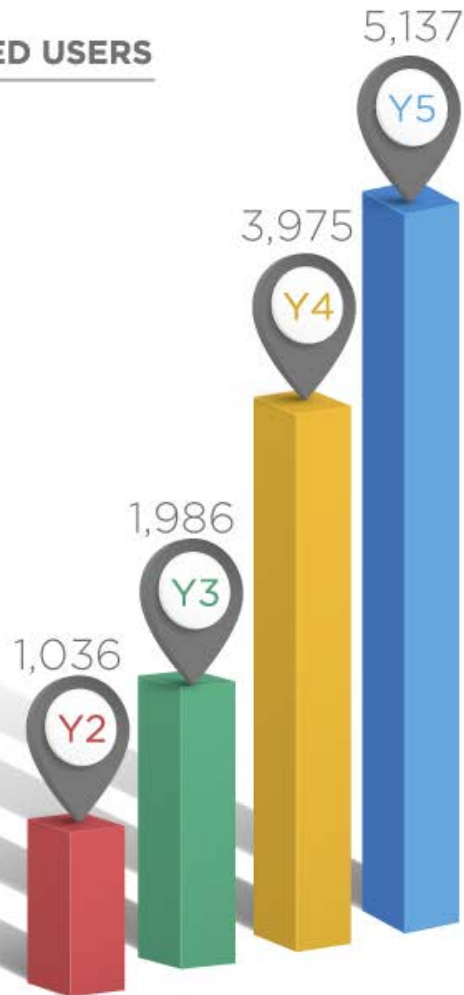
Knowledge
Generation

The Resource Center Nexus:
A unique space of shared value that
brings together demonstrated expertise
and new beginnings.



Nexusipe.org Registered Users

REGISTERED USERS



+ 1 Million Page Views Since Launch

150K Unique Viewers

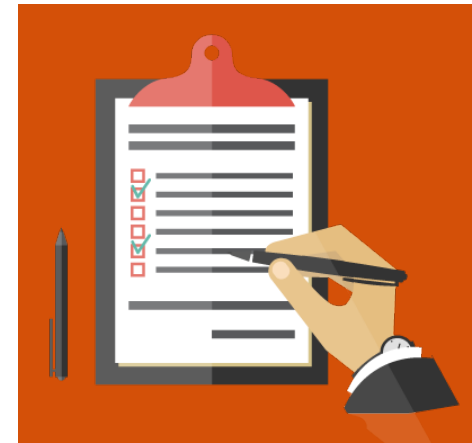
20K New Viewers Each Quarter



National Center - IPECP

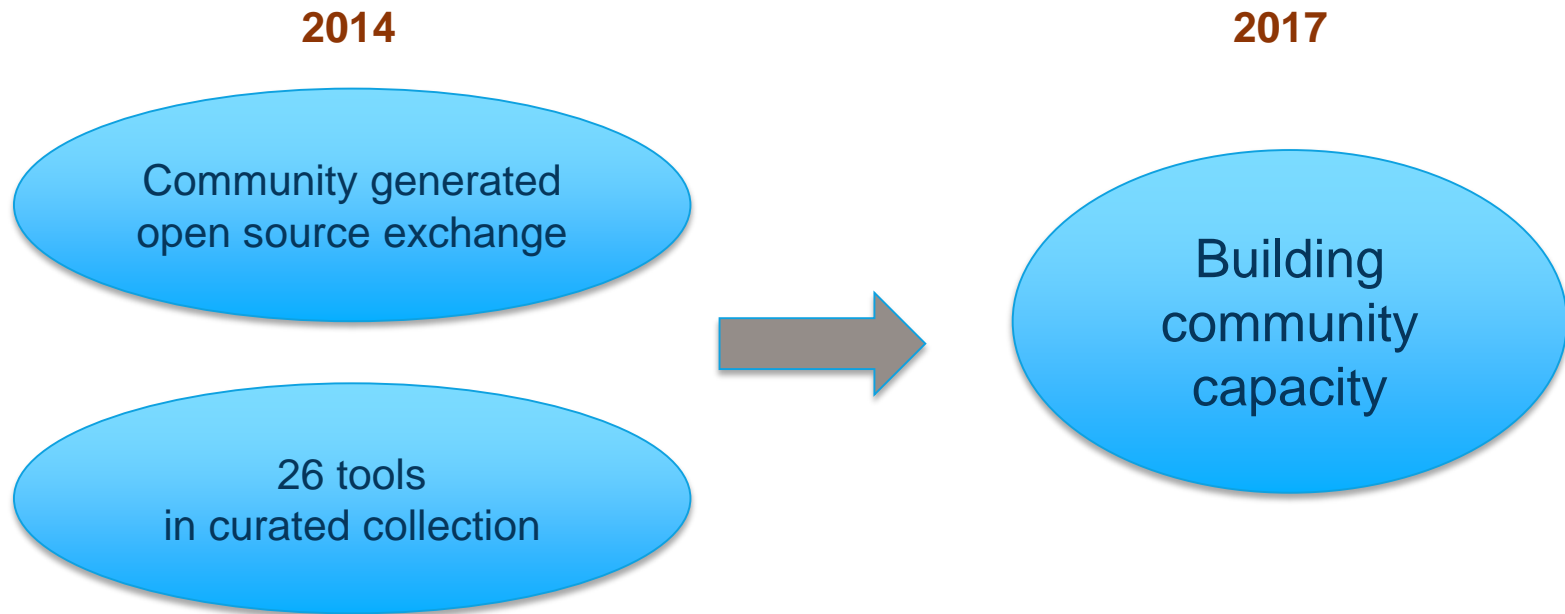
Assessment & Evaluation

Our mission is to promote best practices in assessment and evaluation within the interprofessional education and collaborative practice communities.



Number One Request: “Assessment”

- Evolution of the measurement collection
- Importance of research on linkages between education, practice, and Triple Aim (cost, quality, patient experience)



Education and Training



NATIONAL CENTER for
INTERPROFESSIONAL
PRACTICE and EDUCATION

Education and Training

- ### Strategic Collaborations
- Program collaborations to address specific needs (custom and standard)
 - Modular content for flexibility in use
 - Expanding the bench, utilizing broad base of expertise

- ### Curated Expertise
- responsive consultations on leadership, organizational models
 - faculty development approaches to ensure IPE sustainability

- ### Nexus Learning System
- training series tailored to organizational developmental strategies and adapted based on current learning
 - tools and resources to address spectrum of IPE needs

Resource Center

Thought Leadership

Knowledge Generation



Upcoming Learning Opportunities Minneapolis: Info on Nexusipe.org

Defining Your Nexus: Building the Foundation for Aligning Practice and Education

A New Models of Care Require New Models of Learning Institute

November 16-17, 2017
Registration open!

Preceptors in the Nexus: Interprofessional Learning IN Practice

A New Models of Care Require New Models of Learning Institute

March 2-3, 2018
Registration open!

Interprofessional Big Data: Harnessing the power and opportunity to support interprofessional solutions

A New Models of Care Require New Models of Learning Institute

April 4-5, 2018
Registration open!



Education and Training Offerings

T3 Train-the-Trainer: Interprofessional Faculty Development Program

Three-and-a-half days of in-person training preparing health professions faculty and collaborative practice clinicians from all professions to lead IPE efforts and promote team-based care.

April 18-21, 2018, University of Virginia

May 7-10, 2018, University of Washington

May 15-18, 2018, University of Missouri

Register Now

Go to nexusipe.org for a comprehensive list of dates and locations





NATIONAL CENTER for
INTERPROFESSIONAL
PRACTICE and **EDUCATION**