



March 14, 2024

# National Health Service Corps Loan Repayment Programs

## Opportunities for Tribal Communities

**Calvin Gilreath, Management Analyst**  
**Prince Taitt, Management Analyst**  
Division of National Health Service Corps  
**Clark Conover, Regional Supervisor**  
Division of Regional Operations

Bureau of Health Workforce (BHW)  
Health Resources and Services Administration (HRSA)



# Your Presenters



**Amy Poupart**  
Great Lakes Inter-Tribal  
Council, Inc. (GLITC)



**Chandos Culleen**  
National Council of Urban  
Indian Health



**Prince Taitt**  
National Health Service  
Corps



**Calvin Gilreath**  
National Health Service  
Corps



**Clark Conover**  
Bureau of Health Workforce  
Region 7 – Kansas City



# Special Thank You ...



NATIONAL COUNCIL *of*  
URBAN INDIAN HEALTH

---



**Great Lakes Inter-Tribal Council, Inc.**

---

Lac du Flambeau, Wisconsin





# Agenda

- 1. National Health Service Overview**
- 2. Student Programs**
  - Scholarship Program
  - Students to Service Loan Repayment Program
- 3. Clinician Programs**
  - *Original* Loan Repayment Program
  - Substance Use Disorder Workforce Loan Repayment Program
  - Rural Community Loan Repayment Program
- 4. Site**
- 5. Support and Resources**
- 6. Awardee Story**





# The National Health Service Corps (NHSC)

**Builds healthy communities by supporting qualified clinicians working in areas of the U.S. with limited access to care.**

- ✓ **More than 18,000 NHSC clinicians care for over 19 million Americans**
- ✓ **About 60% NHSC clinicians serve in HRSA-funded health centers**
- ✓ **1 in 3 NHSC clinicians provide care in rural communities**



# National Health Service Corps: Diversity



## Primary Health Care\*



<sup>1</sup> Association of American Medical Colleges, *Diversity in Medicine: Facts & Figures, 2019*

<sup>2</sup> U.S. Department of Labor, Bureau of Labor Statistics *Labor Force Characteristics by Race and Ethnicity, 2021, January 2023 Report 1100*



# Indian Health Service Funding

Since 2019, the NHSC Loan Repayment Program has **dedicated over \$75 million** for awards to clinicians working at Indian Health Service facilities, Tribally-Operated 638 Health Programs, and Urban Indian Health Programs.

Many of the clinicians who benefit from this additional funding through the NHSC Loan Repayment Program often work in NHSC site(s) with a HPSA score that would historically be too low for available NHSC funding to reach the provider.



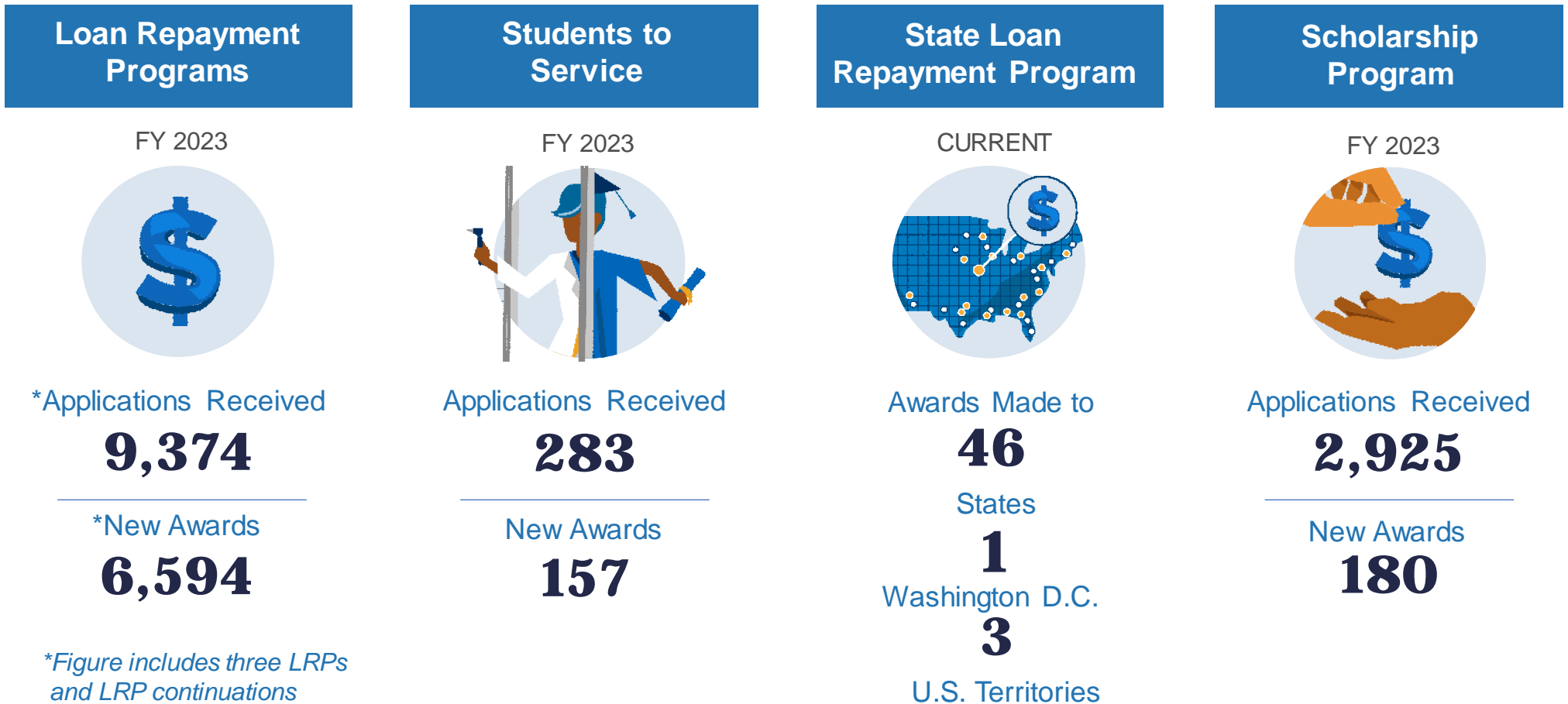
# Loan Repayment Programs Funding

## Tribal Awards 2019 to 2023

<i>Fiscal Year</i>	<i>Awards to All Applicants from ITU Sites</i>
2019	300
2020	407
2021	333
2022	285
2023	215
<i>Totals</i>	<i>1,540</i>



## Applications and Awards



\*Figure includes three LRPs and LRP continuations

# Section 1

# STUDENT PROGRAMS



# Scholarship Program

## Eligibility



U.S. citizen or national



Full-time student at an accredited school, pursuing a degree in:

- Medicine (DO or MD)
- Dentistry (DMD or DDS)
- Nurse practitioner
- Certified nurse-midwife
- Physician assistant (primary care)



Physicians are required to complete postgraduate training in an accredited primary care program.

Dentists, Advanced Practice Registered Nurses and Physician Assistants are encouraged (but not required) to complete an accredited postgraduate training in an NHSC-approved specialty.



\*Scholarship pays tuition, a monthly stipend (taxable) and other reasonable educational and living expenses in exchange for a minimum of two (2) years of full-time service.

\*Available up to 4 years

**2-4**  
Years of  
Service

**NOW ACCEPTING  
APPLICATIONS!**

**Deadline: April 25, 2024**

# Students to Service Loan Repayment Program

## Eligibility



U.S. citizen or national



Full-time student in the final year at an accredited school, pursuing a degree in medicine\* (MD or DO), dentistry\*\* (DMD or DDS), nursing\*\*\* (NP or CNM), or physician assistant\*\*\* (PA)



Have unpaid government or commercial loans for school tuition, reasonable educational expenses, and reasonable living expenses, segregated from all other debts

UP TO  
**\$120,000**  
FOR 3 YEARS  
Full-time/6 YEARS  
Half-time  
SERVICE

## Postgraduate Training Requirements

**\*Physicians (MD or DO):** Must complete an accredited primary medical care residency in an NHSC-approved specialty

- ✓ Internal Medicine, Family Practice, Pediatrics, OB/GYN, Psychiatry, Geriatrics

**\*\*Dentists (DMD or DDS):** Encouraged (but not required) to complete an accredited postgraduate training in an NHSC-approved specialty

- ✓ General Practice, Advanced Education in General Dentistry, Pediatric Dentistry, Public Health Dentistry, Geriatrics Dentistry Fellowship

**\*\*\*Nurse Practitioners (NP), Certified Nurse Midwives and Physician Assistants:** Encouraged (but not required) to complete an accredited postgraduate training in an NHSC-approved specialty

- ✓ A one-year postgraduate training in a primary care specialty



# Students to Service Loan Repayment Program: MCTA Award Enhancement

## Maternity Care Target Area Award Enhancement

- Optional award enhancement of up to an additional \$40,000 in return for service in a Maternity Care Target Area (MCTA) with a MCTA score of 16 or higher.
- Offered to eligible disciplines after awarded into Students to Service Loan Repayment Program:
  - **Family Practice Physicians w/OB specialty**
  - **Physicians with OB/GYN specialty**
  - **Certified Nurse Midwives**



## Section 2

# CLINICIAN PROGRAMS



# General Eligibility Requirements

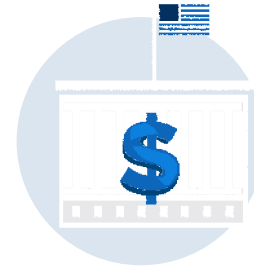
## Eligibility



U.S. citizen or national



Currently work,  
or applying to work,  
at an NHSC-approved site



Have unpaid government  
or commercial loans for  
school tuition, reasonable  
educational costs, and  
reasonable living expenses,  
segregated from all other  
debts



Licensed to practice  
in state where employer  
site is located

**Depending on the program, clinicians must be licensed in one of the following eligible disciplines:**

- Physician (MD or DO)
- Nurse practitioner (primary care)
- Certified nurse midwife
- Physician assistant
- Dentist (general or pediatric)
- Registered dental hygienist
- Psychiatrist
- Psychologist (health service)
- Licensed clinical social worker
- Psychiatric nurse specialist
- Marriage and family therapist
- Licensed professional counselor
- Registered nurse\*
- Pharmacist\*
- Substance use disorder counselor\*
- Certified registered nurse anesthetist\*\*

\*Only eligible for SUD Workforce LRP and Rural Community LRP

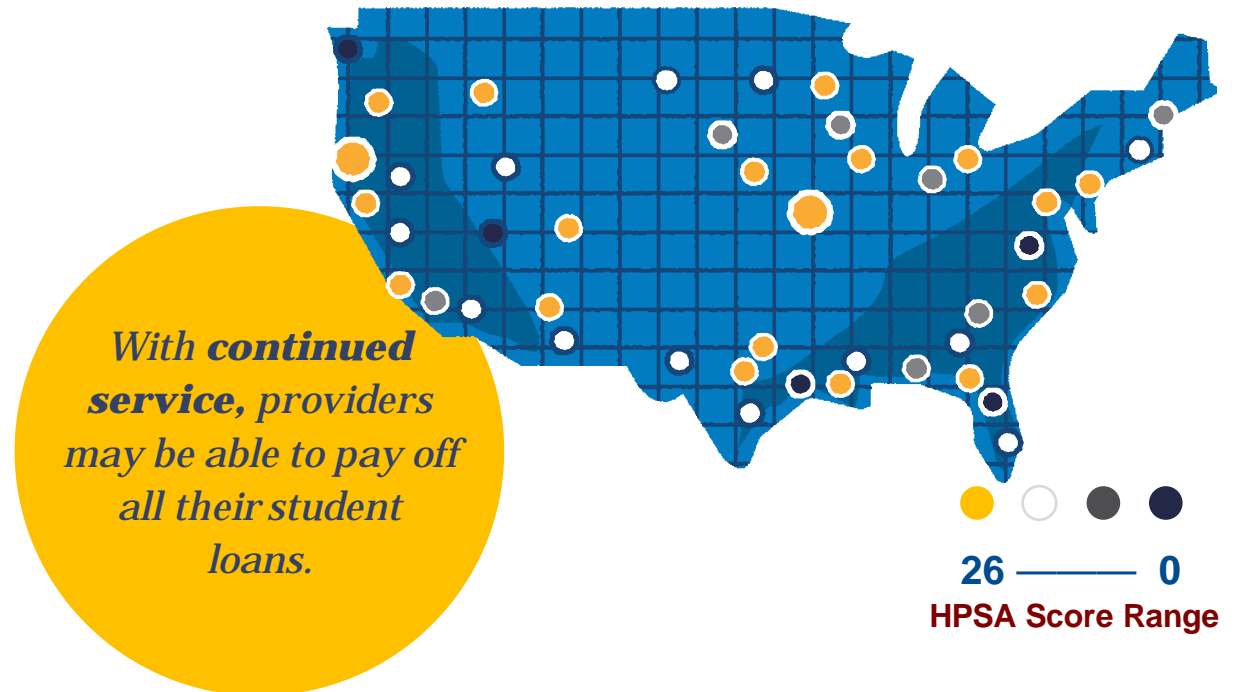
\*\*Only eligible for Rural Community LRP

# Original Loan Repayment Program

UP TO  
**\$50,000**  
FOR 2 YEARS OF  
SERVICE

Offers fully trained primary care clinicians loan repayment in exchange for service in an area of greatest need, called a Health Professional Shortage Area (HPSA).

Higher HPSA Score = Higher Need



Applicants working at NHSC-approved sites with higher HPSA scores are given priority.

# Substance Use Disorder Workforce Loan Repayment Program

*Expands and improves access to quality opioid and substance use disorder treatment in underserved areas nationwide*



AWARDS UP TO  
**\$75,000**  
FOR A 3-YEAR SERVICE  
COMMITMENT

- Must be trained and licensed to provide SUD treatment at NHSC-approved SUD treatment facilities

# Rural Community Loan Repayment Program

*Expands and improves access to quality opioid and substance use disorder treatment in **rural** areas*



AWARDS UP TO  
**\$100,000**  
FOR 3-YEAR SERVICE  
COMMITMENT

- Must be trained and licensed to provide SUD treatment at NHSC-approved rural SUD treatment facilities





# In-Service Requirements

## All NHSC participants:

- Are required to verify their employment and time spent in practice every 6 months. You must document your vacations, sick leave, and other time spent away from your site with NHSC.
- Full-time contract status is 40 hours per week (includes patient care, admin duties, teaching hours, and telemedicine).
  - Requirements vary by discipline, so please consult the Application and Program Guidance for additional clarification.

## Section 3

# SITE INFORMATION



# Indian Tribal Unit Sites – Automatic Approval

## NHSC Auto-Approved Sites

- Federal Indian Health Service Facilities
- Federal Indian Health Service Hospitals
- 638 Critical Access Hospitals
- 638 Compact Clinics
- ITU / BIE School-Based Clinics
- ITU Mobile Clinics
- Urban Indian Clinics





# NHSC Site Auto-Approval Process

Eligible auto-approved NHSC sites apply to the NHSC by taking the following steps:

1. Login to the [BHW Customer Service Portal](#).
2. Select “Apply for NHSC” and provide necessary site information for the NHSC to determine eligibility.
3. Complete the remainder of the online Site Application sections.
4. Review and sign the NHSC Site Agreement; and
5. Submit Application for review and approval.



## Section 4

# SUPPORT & RESOURCES

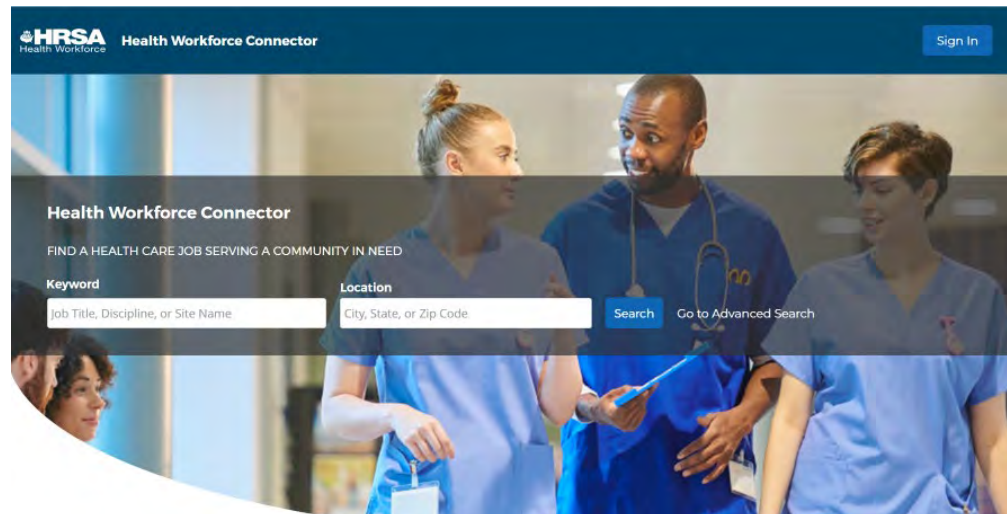




# Health Workforce Connector – Clinician Profiles

## Health Workforce Connector (HWC)

- View job vacancies at thousands of NHSC- and Nurse Corps-approved sites nationwide.
- The Health Workforce Connector lets primary medical, dental, and behavioral health job seekers create a free profile.



### Get more benefits with a Health Workforce Connector profile

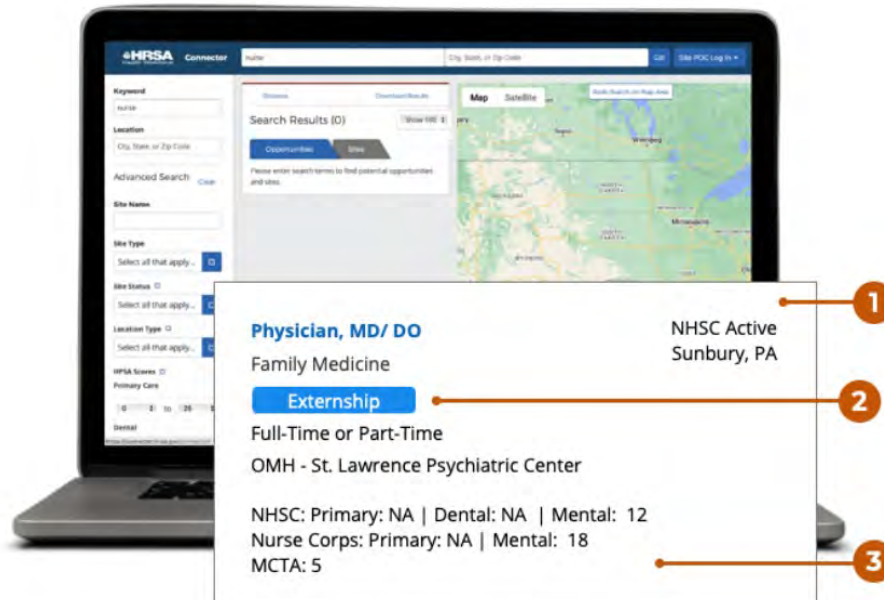
- 🔖 **Bookmark Opportunities and Facilities**  
Save open opportunities and health care facilities to find future openings at a desired location.
- 🔗 **Connect with Health Care Facilities and Other Professionals**  
Network with professionals at health care facilities serving communities in need.
- ⚠️ **Stay Up to Date on New Opportunities**  
Receive alerts for new opportunities customized for you.

[Sign In](#)

# Health Workforce Connector – Site Profiles

## Health Workforce Connector Site Profiles

NHSC-approved sites can create a profile and post job vacancies, visible to thousands of health care professionals who are actively seeking employment in underserved communities.



## Guide to Health Workforce Connector

[Site POC User Guide](#)

[How-To Guide](#)

### 1. Site Status

See the program associated with an opening (such as NHSC, Nurse Corps, and STAR) and its location (city and state).

### 2. Opportunity Type

View if the listing is an open position, internship, or training opportunity.

### 3. HPSA and Other Scores

Check Health Professional Shortage Area (HPSA) scores by program for primary care, dental, and/or mental health as well as Maternity Care Target Area (MCTA) scores for the health care facility.

## SECTION 5

# Awardee Story:

**Drs. Elena Phoutrides & Andrew  
Langfield**





# Drs. Elena Phoutrides & Andrew Langfield

## Elena Phoutrides, MD

**Recipient:** National Health Service Corps Students to Service Loan Repayment Program

**Education:**

- Bachelors of Science in Biology and Theology Boston College; Chestnut Hill, MA
- Doctor of Medicine OHSU; Portland, OR
- Contra Costa Regional Medical Center Family Medicine Residency Program; Oakland, CA
- Board Certified in Family Medicine and Obstetrics

**Biography:**

I am from Portland, OR. I have three siblings and I love spending time with my family. I am married to Dr. Langfield and we have two young boys that keep us busy. I love hiking, camping, working on new hobbies, doing crafts, and cooking. I love my job and enjoy working with my partner!

I love working in the Blackfeet community because I wanted to be in a community where my skills and training in full spectrum family medicine are useful. I am honored to care for people in the Blackfeet community and have enjoyed learning about this beautiful area.

## Dr. Andrew Langfield, MD

**Recipient:** National Health Service Corps Students to Service Loan Repayment Program

**Education:**

- Bachelors of Science in Biology Gonzaga University; Spokane, WA
- Doctor of Medicine OHSU; Portland, OR
- Highland Hospital Internal Medicine Residency; Oakland, CA
- Board Certified in Internal Medicine

**Biography:**

I grew up in Idaho and always wanted to live in the northwest. I have two young boys and a neurotic German Shepherd. I am happily married to my lovely wife Dr. Phoutrides!

I love working in the Blackfeet community because I think it is important to provide high quality health care to rural communities, especially those that have been traditionally underserved and under resourced.



**Drs. Elena Phoutrides & Andrew Langfield**

**Blackfeet Service Unit - Blackfeet Community Health Station**



# Support & Resources – Contact Us

## Customer Care Center

Phone: 1-800-221-9393 M-F, 8 a.m. to 8 p.m. ET, except federal holidays

Web: <http://nhsc.hrsa.gov>

Virtual Job Fair:

<http://jobfair.hrsa.gov>

Health Workforce Connector:

<http://connector.hrsa.gov/>

 Facebook: <http://facebook.com/nationalhealthservicecorps>

 Twitter: <http://twitter.com/NHSCorps>

 LinkedIn: <http://www.linkedin.com/company/national-health-service-corps>

Scan to sign up for email notifications or online at <https://bit.ly/t24oRH>







# Questions





# Connect with HRSA

Learn more about our agency at:

**[www.HRSA.gov](http://www.HRSA.gov)**



**Sign up for the HRSA eNews**

FOLLOW US:

